

REQUEST FOR PROPOSALS

MARTIN LUTHER KING JR. DAY OF SERVICE 2021

EskewDumezRipple, the New Orleans-based architecture, interior design, and urban planning practice, will participate in its seventh annual, firm-wide Day of Service on Monday, January 18, 2021. As architects committed to the civic realm and a sustainable future, EskewDumezRipple (EDR) donates its time and talent throughout the year to numerous initiatives that advocate for quality in the design of our built environment. The Day of Service is an annual initiative, intended to unite design and civic leadership to address social and urban issues with the power of good design and community engagement.

About EskewDumezRipple:

EskewDumezRipple is a nationally honored architecture, interiors and urban planning firm recognized for producing innovative projects grounded by a strong understanding of context, culture, and environment. We build across the country and around the world, with the goal of creating sustainable, beautiful, and equitable communities. For more information, visit: www.eskewdumezripple.com



ABOUT DAY OF SERVICE

As part of EskewDumezRipple's commitment to building community, the firm implements an annual, skills-based service program to benefit non-profit community organizations in the New Orleans and Greater Gulf Coast region. On the Day of Service, EDR donates the time of the entire staff for one work day to community-focused initiatives. During the day-long charrette, stakeholders from selected proposals will work with the EDR staff in a collaborative design process tailored to their organization's mission. Day of Service projects can be in the realm of architecture, interior design, space planning, site planning, signage, budgets, zoning, marketing, furniture, and everything in between. This exchange of knowledge benefits both EDR and the partner organizations by constructing a deeper understanding of our city through thoughtful conversations, in-depth explorations and tangible deliverables completed by design professionals.

PROCESS

1. SELECTION

Proposals received by **November 06, 2020** will be reviewed and of those proposals, four to six projects will be selected by the EDR staff. Each project, depending on its scope, will then be designated a team of 5-10 members from the EDR staff.

2. PLANNING

Team members and their community partner will participate in at least two required planning meetings, **December 4, 2020 and January 8, 2021 from 4:00 to 5:30 pm**, to further identify the project scope and deliverables. **Due to COVID-19 and social distancing, we will be conducting meetings virtually.**

3. DAY OF SERVICE

The actual Day of Service, **January 18, 2021**, is a work day, dedicated to producing the deliverables as agreed upon during the planning meetings. The community partner will be asked to check-in (virtually or in person) with their EDR team to give feedback on the team's progress.

4. PRESENTATION TO COMMUNITY PARTNERS

The Day of Service Final Presentations will be shortly after the Day of Service. Each team will present their work to the group and provide the project partner with the identified deliverables.

5. FOLLOW UP

Lastly, the EDR staff and community partners will be asked to participate in a follow-up survey to evaluate the experience and impact of the day.

APPLICATION SUBMISSION

Please complete and return the following application to Kristin Henry, doscoordinator@eskewdumezripple.com by November 06, 2020 for review.

WHEN

Martin Luther King Jr. Day, January 18, 2021

WHERE

Meetings will be conducted virtually due to COVID-19. Any site visits required will be conducted in a socially distant manner.

IMPORTANT DATES

2020

October 16th	Solicit Project Proposals
November 6th	Project Proposals Due
November 20th	Notify Selected Partners
December 4th	First Project Meeting

2021

January 8th	Second Project Meeting
January 18th	Day of Service
January 22nd	Day of Service Presentations

APPLICATION

ELIGIBILITY

Applicants must have the ability to meet virtually with the team as required.
The project proposal must identify and propose to address a need for the community it serves.
The project must serve the mission of the organization applying.

SELECTION CRITERIA

Projects will be selected based on the following criteria:

Project Viability	Is it feasible to meet the project's needs within the identified time frame?
Organizational Capacity	Is there a clear plan of action after initial design services are provided?
Identified Need	Is there a clear connection between the project's impact on the organization and community, and the identified need?
Organization's Mission	Does the proposed project meet the mission of the partner organization and does it have support from those who will be impacted?
Relevance	Does the project address pandemic relief, social justice, or hurricane relief?

Please provide the following information in a project narrative organized according to the following sections.

PROJECT INFORMATION

Name & address of the Organization
Title of the project for which services are requested
Name of Point of contact
Point of Contact phone number & e-mail address

PROJECT AND PARTNER DETAILS

Is your organization a 501(c)3 or under fiscal sponsorship?

Describe the work of your organization. Include a mission and/or vision statement.

What are your organization's major accomplishments in the past 3 years?

Provide a brief summary of your project and the need it fills in your community. Note which elements(s) of the project you are seeking to fulfill through pro bono design services.

How does your project help the organization achieve its mission?

What will be the next step(s) after our services are complete?

Describe the community your organization serves, and how this project will impact that community. How has or how will this project gain community support?

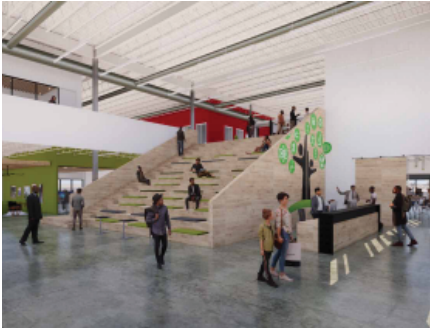
SUBMISSIONS

Please provide your project proposal to:
Kristin Henry, doscoordinator@eskewdumezripple.com, by
November 6, 2020 for review.

If you have questions prior to submitting your application or would like to discuss your proposal, please do not hesitate to contact Kristin Henry by email or at 504-561-8686

PREVIOUS DAY OF SERVICE PROJECT EXAMPLES

STEM NOLA | HQ AND INNOVATION CENTER VISIONING PACKAGE

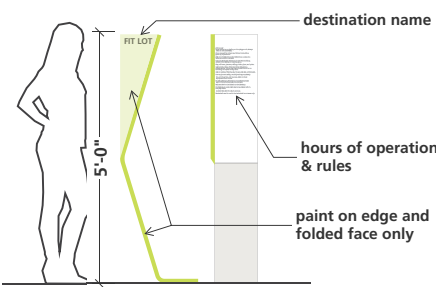


STEM NOLA designs and delivers activities, programs & events that inspire and actively engage students in the fields of Science, Technology, Engineering and Math (STEM), specifically focusing on under-served communities, across the city. In need of a headquarters, STEM NOLA acquired a 42,000 square foot existing building and worked with EDR to create a vision package to be used to secure funds for the project.

EDR worked with STEM NOLA to create:

- Site Design and Stormwater Management
- Program for Interior Spaces, Interior Floor Plans, and Furniture Layouts
- Interior and Exterior Renderings
- Cost Estimate for the Project

FRIENDS OF LAFITTE GREENWAY | SIGNAGE PACKAGE



The Lafitte Greenway is a 2.6-mile linear park located in the heart of New Orleans. The aim of this project was to create signage that will connect people to the Greenway, ensure ease of navigation, educate the public and contribute to the design and character of the existing built environment. After the EDR Day of Service initiative, these signs were fabricated and installed.

EDR worked with Friends of Lafitte Greenway to create:

- An Overall Wayfinding and Signage Strategy
- Drawings and Graphics for Each Sign Type
- Signage Budget

THE NOCCA INSTITUTE | HOMER PLESSY WAY REVITALIZATION STUDY



New Orleans Center for Creative Arts (NOCCA) is a regional, pre-professional arts education center, founded in 1973. NOCCA tapped EDR to do an envisioning and revitalization study of the historic Press Street corridor (now named Homer Plessy Way), where NOCCA currently resides. NOCCA wanted the proposed plan to reflect the NOCCA mission, generate revenue for NOCCA, and connect to the surrounding community.

EDR worked with NOCCA to create:

- Zoning Analysis
- Site Improvements and Site Plans
- Concepts and Programming for Two NOCCA-Connected Buildings
- Phasing Plans

UNCOMMON CONSTRUCTION | CLASS BUILD PROJECT BOOKLET

PLANTER BED

1 HOURS | 3 PARTICIPANTS | \$ 200 - 300

SUGGESTED SIZES: 6'x3'x2'

2x4'S
1x4'S
SOIL
PLANTS
SCREWS

TAPE MEASURE, MITER SAW, DRILL/IMPACT DRIVER, SHOVEL

SHED

6 HOURS | 5 PARTICIPANTS | \$ 400 - 700

SUGGESTED SIZES: 8'x4'x8'

4x4'S
CONCRETE
SCREWS
PLYWOOD
METAL ROOF
PAINT

TAPE MEASURE, MITER SAW, CIRCULAR SAW, DRILL/IMPACT DRIVER, PAINT BRUSH

unCommon Construction uses the build process to enhance learning and empower youth in a real-world, hands-on learning environment. The new unCommon Classes program engages uCC's high school apprentices, alumni, students and other community members in fun, educational, hands-on activities that beautify schools, communities and private residences. For the Day of Service deliverable, EDR created a booklet of potential build projects that can be mixed and matched to suit each individual build day.

EDR worked with unCommon Construction to create:

- A Variety of Build Projects for a Community Garden, Outdoor Classroom, Outdoor Fitness Center, and Dog Park
- Overview of the Materials, Time, and Tools Needed to Complete Each Build Project